

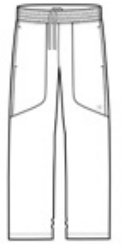


STRETCH
 FLAT LOCK SEAMS FOR COMFORT
 REFLECTIVE DETAILS

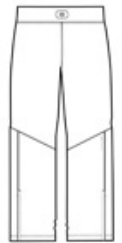
- 95/5 poly/spandex jersey
- OGIO Endurance heat transfer label for tag-free comfort
- Elastic back waistband with contrast jacquard O, interior drawcord at front
- Leg zippers with locking pulls
- Two front pockets
- Reflective O heat transfer on front left leg
- Reflective O Endurance heat transfer on back right leg
- Slightly tapered legs

CARE INSTRUCTIONS

Machine wash cold with like colors. Remove promptly. Use non-chlorine bleach if needed. Cool iron if necessary. Do not dry clean.

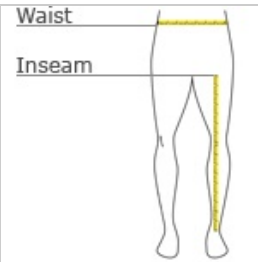


front



back

HOW TO MEASURE



WAIST
 Measure waist at the height pants are normally worn, and keep tape comfortably loose.

INSEAM
 Measure a similar style pant that fits well and is the desired length. Measure from the crotch seam to the hem.

SIZE CHART

	XS	S	M	L	XL	2XL	3XL	4XL
Waist	26-28	29-31	32-34	35-37	38-40	41-43	44-47	48-51
Inseam	30	31	32	32	33	33 1/2	34	34 1/2

COLOR INFORMATION



Blacktop
 PMS NTR BLACK
 C