



A wear-anywhere lighter weight jacket at an out-of-this-world price. Built to charge through mild wind and rain, our Lightweight Charger Jacket features a water-resistant shell and warm fleece body lining for year-round versatility.

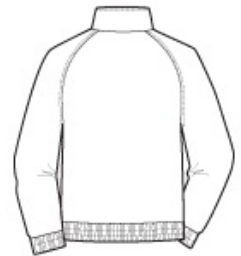
- 100% polyester Taslan shell
- 100% polyester lightweight fleece body lining
- 100% polyester sleeve lining
- Vislon® zipper
- Front zippered pockets
- Interior pocket
- Port Pocket™ for easy embroidery access
- Elastic cuffs with adjustable self-fabric tabs and hook and loop closures
- Elastic waistband

CARE INSTRUCTIONS

Machine wash cold with like colors, only non-chlorine bleach if needed. Tumble dry low, remove promptly, cool iron if necessary. Do not dry clean.

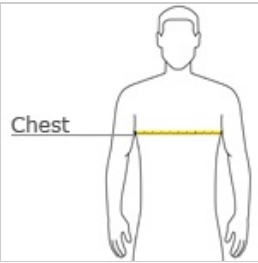


front



back

HOW TO MEASURE







CHEST
With arms down at sides, measure around the upper body, under arms and over the fullest part of the chest.

SIZE CHART

| | LT | XLT | 2XLT | 3XLT | 4XLT |
|-------|-------|-------|-------|-------|-------|
| Chest | 41-43 | 44-46 | 47-49 | 50-53 | 54-57 |

COLOR INFORMATION

| | | | |
|--|---|---|---|
|  |  |  |  |
| Battleship Grey PMS 7540 C | True Black PMS NTR BLACK | True Navy PMS 533 C | True Royal PMS 7687 C |